



## NEW THINKING. NEW POSSIBILITIES.

People's expectation toward individual mobility requires more than just a convenient means of transportation. The old understanding of cars has become outdated. A car represents individuals' lifestyles, and it became an integral part of their lives. At the same time, the automobile industry has experienced seismic change. Hyundai Motor Company has grown rapidly to become one of the largest automakers, backed by world class production capability and superior quality. We have now reached a point where we need a qualitative approach to bring bigger ideas and relevant solutions to our customers.

This is an opportunity to move forward and we have developed a new brand slogan that encapsulates our willingness to take a big leap. Led by our new slogan and the new thinking underlying it, we will become a company that keeps challenging itself to unlock new possibilities for people and the planet.

**Hyundai Motor Company**  
www.hyundai.com

GEN. LHD 1211 ENG. ID-KM

Copyright © 2012 Hyundai Motor Company. All Rights Reserved.

www.facebook.com/hyundaiworldwide   [www.youtube.com/hyundaiworldwide](http://www.youtube.com/hyundaiworldwide)



 NEW THINKING.  
HYUNDAI NEW POSSIBILITIES.

# ACCENT

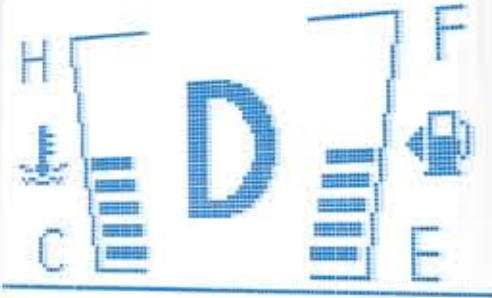


A SMALL WONDER.



**Introducing the all new Accent.**

A compact car means you have to compromise, right? Wrong. With the all-new Hyundai Accent, you'll wonder how a compact car's specification can be so comprehensive.



ECO Driving



MP3  
HANDS  
FREE



SMALL IN SIZE, BIG IN STATURE.

Why give up style, performance and refinement just because you've made the decision to drive a compact car? Well, you don't need to. Incorporating features found in higher class cars, the new Accent gives you sleek good looks, advanced technology and groundbreaking safety attributes, and tops it all off with a robust, sporting character all of its own.



**GET THE LOOK  
AND YOU ATTRACT THE LOOKS.**

The world moves fast, so it's important to catch people's eye.  
The new Accent does just that, with a profile that's modern, athletic and futuristic.

**Hungry for the kilometres,  
lean on the refuelling stops.**

Drive the new Accent, and immediately, you're struck by the quiet ride, the generous interior space and the abundance of up-to-the-minute technology. You'll notice something else too: the fuel gauge hardly drops. That's because Hyundai engineers have devised one of the most fuel efficient engines there is, one that takes only 5.9 litre of fuel burned to run 100km. (in case of 1.4 Manual Transmission)

Fuel economy is the defining goal of any vehicle that aspires to combine affordability with performance.

**l/100km**

**5.9**





Top of the specification sheet: style



**SLEEK, DYNAMIC DESIGN IN EVERY DIMENSION.**

Increased length, increased wheelbase, lowered height and shortened front overhang. Proportions that tell you all you need to know about the new Accent's sporting characteristics. And leave you in no doubt that this is one stylish vehicle.





Self-assurance on four wheels.



**A CAR THAT GOES A LITTLE FURTHER.**

With style to burn and a distinctive outline, the new Accent's presence on the road has real clout. Take it into the city—the place where trends are set—and you can feel yourself setting a trend of your own. One where comfort meets functionality. Where street toughness is built in, but where enjoyment is never far behind.

APPEARANCES ARE NOT DECEPTIVE.

**Refinement whichever way you look at it.**

Compact it may be, but the new Accent's long low cabin space and sculpted lines create the feeling of a much larger chassis. Side on, the coupé-like profile reinforces the sporting appearance, helped by the powerfully designed C-pillar. From behind, wide rear lamps, an uncluttered surface design and rear reflectors combine to leave an impression of refined modernity.







**139** CO<sub>2</sub>  
**g/km** emitted for every kilometre travelled.

**ECO Driving for a safer, healthier planet.**

As you'd expect, the new Accent's emission figures are also compact. As little as 139 grams of CO<sub>2</sub> per kilometre. A car for tomorrow, today.



EXCEPTIONAL DRIVING COMES FROM  
EXCEPTIONAL ENGINEERING.

**blue**

#### Gamma engines

Lightweight to enhance fuel economy, a Gamma 1.4 CVT engine produces a maximum 108ps at 6,300rpm (107ps at 6,300rpm in Middle East Region), while a Gamma 1.6 CVT engine produces a maximum 124ps at 6,300rpm. The diesel alternative, a 1.6 VGT unit, produces a maximum 128ps at 4,000rpm.



#### Blue—the colour of driving.

The new Accent is as appealing under the bonnet as it is above. Chief among the attractions is Blue Pack, a fuel efficiency package, which delivers more eco-efficient driving. An alternator management system controls the power supply to the battery, putting less strain on the engine. Maximising energy regeneration when decelerating and idling, the benefits come to the fore in start/stop urban traffic, since both fuel consumption and emissions are minimised. Not only that, but acceleration performance is also enhanced, through reduced power delivery to the alternator when picking up speed.

#### Contact with the road, less resistance with the air.

The new Accent's Blue Pack doesn't end with the engine. Silica tyres are fitted as standard, their low rolling resistance contributing to reduced fuel consumption while still maintaining excellent grip. Elsewhere, a bumper lip and rear deflector reduce air resistance.

#### A. Automatic transmission

With the oil pressure varying for smoother shifting, the 4-speed automatic transmission offers highly responsive, sporty acceleration.

#### B. Manual transmission

5 / 6 speed manual gearbox provides smooth, noiseless gearshifts thanks to a key and ball-type synchromesh, optimised gear tooth shape and precision machining.

(6-speed not available in Middle East Region)





PEACE OF MIND IS ALL PART OF THE DRIVE.



**Built for strength, designed for safety.**

The new Accent's chassis is constructed using a collision load dispersal mechanism. In the event of a head-on impact, force is distributed along three paths, absorbing energy to protect the car's occupants.



For Hyundai, the most important part of the driving equation is you. That's why the new Accent, like every other Hyundai's vehicle range, incorporates the very latest active and passive safety features. From an advanced airbag system to the use of high-tensile-strength steel plates in the chassis and an anti-lock brake system, it will come as no surprise that the new Accent achieved impressive crash test ratings.



**Anti-lock Brake System (ABS)**

When braking on wet and slippery roads, any deviation in direction is detected by the ABS sensors. The individual anti-lock brake system then activates to keep your wheels from locking up, prevent skidding and maintain directional control.

**A. Airbags all round**

6 airbags provide all-round protection. One for the driver, one for the front-seat passenger, two curtain airbags running the length of the cabin, plus two side airbags.

**B. Rear parking assist system**

(including back-warning system)

A rear camera relays images to the screen in the electro-chromic rear-view mirror. When parking, guide lines on the screen show you where you are in relation to other vehicles and the kerb, to guide you into position.

**C. Back-warning system**

Sensors in the rear bumper detect objects you can't see when reversing, and sound a warning inside.



BE PRACTICAL, BUT BE INSPIRED.

Technological and fuel efficient as it is, the new Accent also expresses Hyundai's fundamental design principle: fluidic sculpture. The proof comes out on the road. As the body shape cuts the air, you sense the harmony between the exterior and interior, the gratifying comfort and the sheer driveability. The distinctive radiator grille is just the start. Robust yet stately, strong yet luxurious, the pleasure begins as soon as you start the engine.



## LOOK WHAT YOU FIND INSIDE.

It's hard to imagine our lives without technology. In the new Accent, the latest technological devices keep you connected to the modern world.

Bluetooth hands free system

MP3  
HANDS  
FREE



Staying in touch means being able to talk to friends and colleagues whenever you want to. With Bluetooth functionality, you can make and receive phone calls hands-free through the car's stereo system, keeping things safe and convenient.



MODERN AND ARCHITECTURAL.  
THE BLUEPRINT FOR THE IDEAL CABIN LAYOUT.



#### Supervision cluster

The supervision cluster, with its circular rev counter and speedometer, is illuminated with white and blue backlighting for optimum clarity and readability. Providing vehicle information through both sight and sound, no-nonsense functionality combines with sporting elegance.



#### Computer trip system

An onboard computer gives you useful driving information such as journey time and distance to empty. It's also where you'll find the ECO Drive indicator that helps you drive in a more fuel-efficient, economical way.

#### From here to your destination, you're in control.

The new Accent's driver space has been designed around the driver. It sounds obvious, but it's something that's often overlooked. The seat position provides you with a commanding view of the road ahead. Controls are logically positioned, and dials and instrumentation are placed in a natural, uninterrupted eye-line. The balanced proportions of the symmetric, Y-shaped dashboard fascia carry through to the doors, with their organic lines and sporty grip handles. The steering wheel is a three-spoke design that fits comfortably in the hands, while trim details are picked out in high glossy black, enhancing the hi-tech air.



#### Cluster

The 2-circle type cluster which further improved the luxurious appearance by white and blue light offers drivers various information through a hi-tech LCD.

#### A. Engine start/stop button

A feature inherited from high-end cars with a sporting prowess, the engine start/stop button requires just a simple push to fire the engine.

#### B. Smart key

A key that's as neat and practical as the car itself. For ease of use, three separate buttons lock and unlock the doors and release the trunk.





INCREASED SPACE AND INCREASED COMFORT.  
MAKE YOURSELF AT HOME.

**However far you're going, you're taken care of.**

The new Accent's seats offer good firm support to make even the longest journeys comfortable. And because wind noise can affect your enjoyment when driving at a constant speed, sound proofing has been optimised throughout the vehicle; noise intake prevention structures around the door handles, air intakes of the engine built to emit less noise, and anti-noise connectors in the outside mirrors.



Spacious is not a word that normally applies to compact cars, but the new Accent once again upsets the rule book. What's more, it does so with style. There's plenty of leg and head room for both driver and front and back seat passengers, and shoulder room is one of the widest for a car in this class. There are elegant interior trims to choose from, each coming in three seat patterns.



**Bluetooth hands free phone calls & Steering wheel remote control**

From the driver seat of the new Accent you can operate a Bluetooth-enabled mobile phone without having to take your hands off from the steering wheel. You can also control the stereo system and adjust the volume of phone calls with the remote control on the steering wheel.

**A. Full auto air conditioner**

Available as an option, full auto air conditioning lets the driver select one climate level setting and the passenger another. Just set the desired temperature and let the system take care of the rest-ensuring a customized interior climate that is fully comfortable and cozy for everyone on board.

**B. Manual air conditioner**

Convenient and instantly recognizable triple dial knob type control lets you easily adjust the air conditioning.

**C. iPhone, iPod and USB port**

A USB port on the front console means you can connect an \*iPhone / iPod and MP3 player or other portable multimedia device and play your music through the car's stereo system. Plug and play, on the move.

\* iPhone and iPod are trademark of Apple Inc.



## WONDER NO MORE.

You can ask yourself how it manages to include everything you need. You can ask yourself how it blends style and economy so well. But really, there's no need to question. Just take a seat and enjoy.



## MORE ACCENT



### THE MANY FACETS OF A GREAT CAR.

#### Outside and in, features that never go unnoticed.

From stylish exterior to hi-tech interior, it's the details of the new Accent that draw the attention. To say nothing of nine beautiful exterior finishes, the latest technological devices inside will let you experience the convenience and pleasure just like you do in everyday life. Let yourself welcome the opportunity to make the new Accent uniquely yours.



#### Head lamps

Providing optimum brightness at night, a two-piece bezel design adds a touch of luxury during the daytime.



#### Fog lamps

As well as giving you extra visibility in foggy weather, the fog lamps are all part of the stylish, continuously-designed body shell.



#### Side repeater mirrors

Stylish, modern touch, lamps in the side mirrors provide extra visibility and safety when turning.



#### Rear combination lamps

Forming a harmonious part of the rear and sides, wraparound rear lamps deliver highly visible illumination.



#### Radio + USB + AUX

Integrated system plays radio and other multimedia applications like MP3 files by using mobile devices such as iPod and USB. The tray provides a room for those devices and other small items.



#### Sunvisor

The sunvisor has been redesigned using a knit-embossed fabric for a luxurious feel, and incorporates a pocket-type ticket holder for convenience.



#### Sliding armrest

The centre console armrest cover moves about 60mm forward to enhance your comfort.



#### Audio system

The audio system, with radio, CD, MP3, USB and AUX, features 4 speakers and 2 tweeters, for high quality sound reproduction on the move.



#### Seatbelt pretensioners

In a collision a sensor detects the impact and automatically tensions the seatbelts around the pelvis, for additional protection.



#### Up and down headrests

The headrests of the new Accent are adjustable - up and down - raising to suit you in comfort and safety.



#### Power window controls

Ergonomically positioned, the power window control switches are metal coated for a better grip.



#### Luggage space

Luggage-carrying capacity is an impressive 389 litres. (SAE) Enough to hold four golf bags and three small bags with ease.



#### Sunglasses holder

The new Accent keeps your sunglasses just where you need them - in a convenient holder within easy reach.

## INTERIOR TRIMS



Leather Beige **GLS**



**GL**



**GLS**



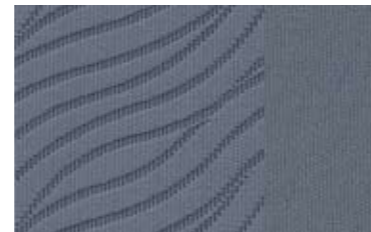
Leather **OPT**



Leather Grey **GLS**



**GL**



**GLS**



Leather **OPT**



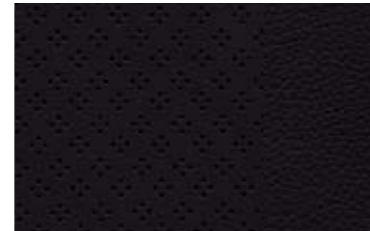
Leather Black **GLS**



**GL**

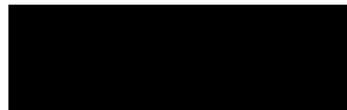


**GLS**



Leather **OPT**

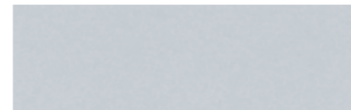
## EXTERIOR COLOURS



Phantom Black **MZH**



White Crystal **PGU**



Sleek Silver **RHM**



Veloster Red **P9R**



Sonic Silver **N9S**



Clean Blue **T9U**



Blue Ocean **UU9**



Green Apple **VE9**



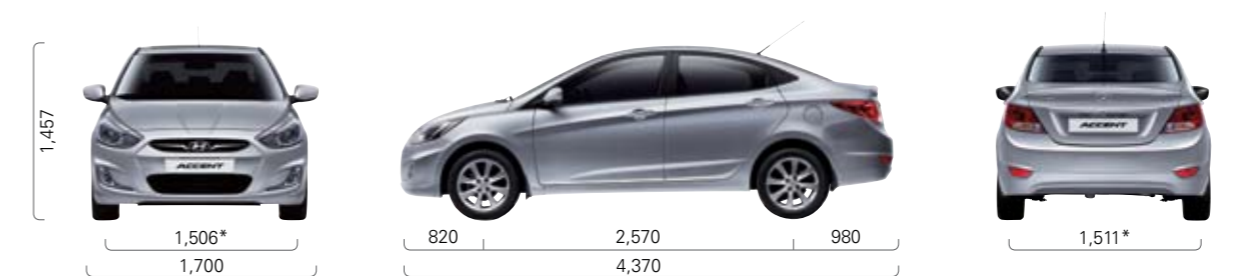
Bronze **ZBF**

## SPECIFICATIONS

Dimensions				
Leg room (mm)	Front / Rear	1,062 / 846		
Head room (mm)	Front / Rear	1,014 / 946		
Shoulder room (mm)	Front / Rear	1,364 / 1,356		
Hip room (mm)	Front / Rear	1,304 / 1,198		
Minimum ground clearance (mm)		147		
Engine		Gamma 1.4 CVVT	Gamma 1.6 CVVT	U-II 1.6 VGT
Engine type		Gasoline		Diesel
Displacement (cc)		1,396	1,591	1,582
Max. Power (ps / rpm)		108 / 6,300 (107 / 6,300 in Middle East)	124 / 6,300	128 / 4,000
Max. Torque (kg-m / rpm)		13.9 / 5,000 (13.8 / 5,000 in Middle East)	15.9 / 4,200	26.5 / 1,900-2,750
Bore x Stroke (mm)		77 x 74.99	77 x 85.44	77.2 x 84.5
Electrical system		Alternator	13.5V 90A	12V 120A
		Starter	12V 0.9kW	12V 1.7kW
Suspension				
Front		McPherson strut type with coil spring		
Rear		CTBA (Coupled Torsion Beam Axle)		

- Some of the equipment illustrated or described in this catalog may not be supplied as standard equipment and may be available at extra cost.
- Hyundai Motor Co. reserves the right to change specifications and equipment without prior notice.
- The colour plates shown may vary slightly from the actual colours due to the limitations of the printing process.
- Please consult your dealer for full information and availability on colours and trims.

## DIMENSIONS



## WHEELS



\*Wheel tread · 14-inch (F/R) : 1,488 / 1,493 · 16-inch (F/R) : 1,506 / 1,511