



## NEW THINKING. NEW POSSIBILITIES.

People's expectation toward individual mobility requires more than just a convenient means of transportation. The old understanding of cars has become outdated. A car represents individuals' lifestyles, and it became an integral part of their lives. At the same time, the automobile industry has experienced seismic change. Hyundai Motor Company has grown rapidly to become one of the largest automakers, backed by world class production capability and superior quality. We have now reached a point where we need a qualitative approach to bring bigger ideas and relevant solutions to our customers. This is an opportunity to move forward and we have developed a new brand slogan that encapsulates our willingness to take a big leap. Led by our new slogan and the new thinking underlying it, we will become a company that keeps challenging itself to unlock new possibilities for people and the planet.

Hyundai Motor Company  
www.hyundai.com

GEN. LHD 1310 ENG. ID-KM

Copyright © 2013 Hyundai Motor Company. All Rights Reserved.

www.facebook.com/hyundaiworldwide  
www.youtube.com/hyundaiworldwide  
plus.google.com/+hyundai



NEW THINKING.  
NEW POSSIBILITIES.

# Tucson



# Twenty-four hours

There are many facets to metropolitan living. Often, you don't know what the new day will bring. But that's all part of the appeal. With the purposeful, powerful Tucson on your side, life only gets better.

07:00  
Lake park

10:00  
East Grand  
Avenue

13:00  
Chicago  
Riverwalk

15:00  
City hall

18:00  
Dan Ryan  
Expy

20:00  
Cafe de  
partie

22:00  
Fancy  
cafe

23:00  
City hotel





## FROM DAWN TO DUSK

The city never sleeps. There's always the need to get somewhere. The morning means rush hour, but before all that, you take a little time to reflect. That's just what Tucson does, with its muscular, rigid superstructure echoing the bold lines of the urban backdrop. Standing on its distinctive, newly-designed wheels, Tucson is ready for anything.



## METROPOLITAN STYLE

Let's face it. You live here for the style more than anything else. The fashions, the gadgets, the trends, they all move fast, and half the fun is striving to keep up. The Tucson is a deadly serious style statement, confident and alluring, and with fluidity completely at one with the city's ever-changing moods. Individual, yes. Part of the crowd, never.





## A NEW WAY OF SEEING

With a sculpted, compact form providing perfect off-the-peg functionality, Tucson draws attention wherever it goes.

The headlamps feature both projection-type headlamps and LED positioning lamps, illuminating more of the road ahead at night and providing an assertive presence during the day. Meanwhile, LED rear combination lamps offer optimum visibility while further emphasizing the car's distinctive character.





Tucson



## WITH BEAUTY COMES UTILITY

It's not just what's on the surface that matters. You need a healthy dose of practicality too, which is why Tucson combines beauty with optimum utility. Its aggressively-molded three-dimensional side panels deliver sporty, dynamic style, while also providing enhanced structural integrity. At every level, this is a car that exceeds the standard.

## FITTING RIGHT IN

Slide into Tucson's driver seat and you're instantly reassured. Controls are positioned for maximum convenience, while outstanding visual and the tactile design make driving the pleasure it was always meant to be. A press of the sporty engine start/stop button brings the car to life, while large front cup holders feature an attractive mood light.









## TAKING YOU WHERE YOU WANT TO GO

Sometimes, you just have to get away. The Tucson is ready to add excitement to any expedition. A state-of-the-art audio system turns every journey a true road trip. You can plug into your favorite sounds, and stay in touch with your friends with hands-free phone calls.

### Audio system

With a new-generation radio/CD/MP3 audio system, Tucson understands the importance of music on the go.



### Steering wheel remote control

With controls built into the steering wheel, there's no need to take your hands off the wheel to carry out driving functions.



### Trip computer

Displays trip information, including available distance and average speed.

Driving information



Available distance

### Supervision cluster with color LCD

Illuminated by means of cool blue lighting, the newly-designed Color TFT LCD supervision cluster keeps you informed of a comprehensive range of vehicle information. Not just technologically advanced, it's sporty too, with dual cylinder-type dials providing an edginess more often found in motorsport.



### Panorama sunroof control

Located at head height just where they should be, controls for the panorama sunroof operate with fingertip precision.



### USB & AUX

Simply connect your \*iPod, iPhone or other portable device using the USB or AUX ports, and you have a soundtrack to accompany your travels.

\*iPod and iPhone are trademark of Apple inc.

## ALL ABOARD

It's the weekend, and you're swapping the buzz of the city for the buzz of the country. That means packing your gear for two days of adrenaline-filled action. Plus a little relaxation, of course. No problem. The Tucson takes it all in stride, easily accommodating everything from unusually-shaped sports gear to conventionally-sized cargo, with the rear seats folding down in a variety of combinations.



### Full seat upright

With all seats upright, there is plenty of storage space, while rear seat passengers are all seated comfortably.



### Full seat folding

When maximum space is required, the rear seats fold flat, giving you huge storage capacity.



### Rear seat reclining

The Tucson's rear seats now recline, providing passengers with an extra degree of comfort that makes a big difference on long journeys.

### 6:4 split folding back

Fold one of the rear seats down and the car's cargo-carrying ability is immediately transformed. From big to even bigger.

### Cargo screen

A cargo screen can be pulled across to keep your gear hidden from view and protect it in transit.





## URBAN ARCHITECTURE

All around the city, life goes on. But this is not an everyday car. Whether in motion or standing still, its stable, powerful shape always draws the eye. From the gently sloping windscreen –with overtones of a sports coupé–to the rear spoiler that reinforces both the aerodynamics and the visual sophistication, Tucson is relaxation defined.

A white Hyundai Tucson SUV is driving on a city street. In the foreground, a concrete bridge with metal railings spans across the road. A blue Hyundai Tucson SUV is driving away from the camera on the right side of the road. The background features modern city buildings and a clear sky.

# At home in the metropolis

No wonder they call it the urban jungle. The streets, the sprawl, the constant movement. It's tough but it's rewarding, and you wouldn't want it any other way. You're at home here, and you need a car that's equally so.

The Hyundai Tucson shares your outlook: rugged, uncompromising, yet modern and forward-thinking. An SUV to fit your lifestyle.



## POWER YOU CAN FEEL

If you're going to upgrade, upgrade where it'll be felt most - under the hood. Hyundai engineers have done just that, with a Nu 2.0 MPI gasoline engine that delivers a maximum 158 ps at 6200 rpm. At the same time, the manual transmission now comprises a technologically-advanced 6-speed gearbox that guarantees silky-smooth gearshifts and improved fuel economy.

\* Fuel economy figures are based on EU-2 standards.



### A. Automatic transmission

Smooth and progressive, the 6-speed automatic transmission now features a boot-type gear lever for a more positive, comfortable feel.

### B. Manual transmission

Now a 6-speed unit, the manual transmission has been engineered to facilitate optimum driving performance.

### C. Theta II 2.4 MPi engine

Powerful, lightweight and quiet, the Theta II 2.4 MPi gasoline engine provides exceptional performance and economy.

### D. Diesel R 2.0 engine

The highly efficient Diesel R 2.0 engine delivers a maximum 177 ps at 4000 rpm, and features LP-EGR (Low Pressure Exhaust Gas Recirculation) for impressively low emissions figures.

### Nu 2.0 MPi engine

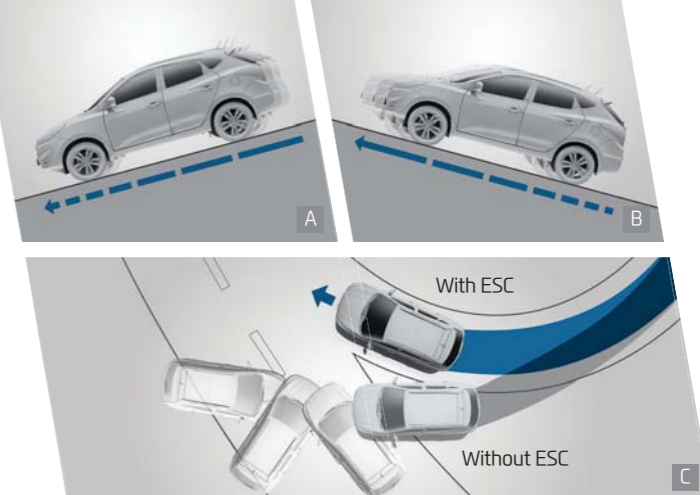
Multi-point injection to provide efficiency, Nu 2.0 MPi engine features dual-continuous variable valve timing and has an all-aluminium construction that reduces weight and thus lowers fuel consumption.





## PREPARED FOR WHAT THE ROAD BRINGS

The demands of driving grow day by day. Poor road surfaces, obstacles, and parking uphill or downhill ask a lot of you and your car. Things are easier when you're prepared in advance, and Tucson incorporates a number of features that augment control and handling. From Electronic stability control (ESC) to Hill-start assist control (HAC) to multilink suspension, whatever you encounter can be negotiated with maximum peace of mind.



### A. Down-hill brake control (DBC)

With your foot hovering over the brake, driving slowly down steep hills can be tricky. Down-hill brake control (DBC) helps you maintain control.

### B. Hill-start assist control (HAC)

Hill-start assist control (HAC) lets you pull away safely uphill from a standing start without rolling backwards.

### C. Electronic stability control (ESC)

Electronic stability control (ESC) helps you brake safely and maintain control in cases of sudden braking or swerving.

### Full-time 4WD

Providing maximum traction, the full-time four-wheel-drive system senses the road surface and torque demands and adjusts power distribution according to the best combination of all four wheels.



Normal

### Normal speed driving

Most of the driving power is delivered to the front wheels.



On Cornering

### In case of turning

When turning, power to match the car's speed and turn radius is delivered to the rear wheels.



Slippery Situations

### Wheel's slippery situation

When the wheels of the front-wheel-drive car encounter slippery roads, suitable driving power is delivered to the rear wheels according to the road conditions.



Slippery Situation or 4WD Lock

### Lock mode

To maximize performance on rough road conditions.

(Mode is operated below 40km/h)

## MAKING THINGS EASY, MAKING THINGS SAFE

It's hard to overestimate the things that make your life run smoother. You have meetings to get to and friends to catch up with. If your car helps you park with no hassle, shows you your blind spot to the rear, and removes the need to go looking through all of your bag's contents for your keys, imagine how convenient driving can be. Safety and protection are paramount in a car. As well as a comprehensive airbag system, Tucson features active headrests that move up and forward to protect against whiplash if a vehicle drives into you from the rear. The basis of it all is a high-tensile steel chassis that provides a strong, rigid structure built to withstand impacts.



### Smart key

The Tucson automatically detects your smart key when you approach. A press of a button on the door handle is all it takes to unlock the car.

### One-touch signal system

When changing lanes, touching the turning signal slightly and returning it back to neutral gives three flashes of the signal lamp.

### Electric chromic mirror (ECM) with Rear camera display (RCD)

The Electric chromic mirror (ECM) features a screen displaying the view behind, showing vehicles you might otherwise miss and assisting with lane changing.



### 6-airbag system

The 6-airbag system comprises dual front airbags, two side impact airbags at the front, and two curtain airbags running lengthways on both sides.



### Auto cruise control

With a switch conveniently positioned on the steering wheel, auto cruise control lets you maintain the selected speed.



### Rear parking assist system (RPAS)

Sensors in the rear bumper detect when you get too close to objects while reversing, protecting against knocks and helping you park safely.





## HUSH

With performance and handling like no other, soundproofing has been improved so that minimal road and acceleration noise penetrate the interior cabin. After all, nothing should distract you from your driving experience.





## FROM BEGINNING TO END

You've worked hard. You've played hard.  
So has Tucson. It's your kind of car.

## THE COMPLETE PACKAGE

The Tucson is a completely integrated driving package that allows you to contribute to the level of integration with an extensive range of options. As with most things Tucson, these work on two levels, adding functionality while enhancing aesthetics.

This is a car that keeps you connected: to the road, with user-friendly driving functions, to nature, thanks to a panorama sunroof, and to a diversity of modern media.



### A. Projection headlamps with LED positioning lamps

The Tucson's technologically advanced projection headlamps, found on leading luxury vehicles, light the road with sharp, highly-defined beams, bringing a new level of illumination and detail to night time driving.

### B. LED rear combination lamps

Sculpted into the bodywork to emphasize the car's dynamic flow, LED rear combination lamps provide optimum visibility to drivers behind you.

### C. Fog lamps

Positioned low and forming a part of the robustly-moulded bumper, the front fog lamps provide invaluable penetrating lighting in murky conditions.

### D. Panorama sunroof

On fine days, slide back the panorama sunroof and enjoy fresh air, sunlight, and an added thrill to the drive.

### E. Outside mirror repeaters

As part of the outside mirrors, LED side repeater lamps increase your safety by making you more visible when turning.

### F. Radiator grille

Sporty, recognizable and totally Hyundai, that's Tucson radiator grille. Hexagonal and black, it's distinctive and refined.

### G. Rear spoiler with high-mounted stop lamp

Aerodynamics are at the heart of Tucson, and the rear spoiler is an integral part of the mix. Forming a natural extension of the roofline, it has a high mounted stop lamp to enhance your visibility to drivers behind.

### H. Full auto air conditioning system

This lets the driver set one temperature level and the front-seat passenger another, according to each person's preference.

### I. Manual air conditioning system

Working quickly to cool down the car's interior, manual air conditioning features a four-step switch to set the fan just the way you want it.

### J. Front seat warmer

Front seat warmers are a welcomed feature on cold winter days, offering a gratifying cosiness and warmth.

### K. Power window controls

The controls for the power windows are ergonomically positioned on the driver's door, to allow maximum control and comfort.

### L. Center console tray

Positioned between the two front seats, this is the place to keep frequently-used items and other useful accessories.

### M. Power outlet

A 12 volt power outlet in the cargo area lets you charge your mobile phone and other devices.

### N. Front seat active headrests

If a vehicle hits you from behind, active headrests sense the impact and move up and forward, protecting passengers against head and neck injuries.

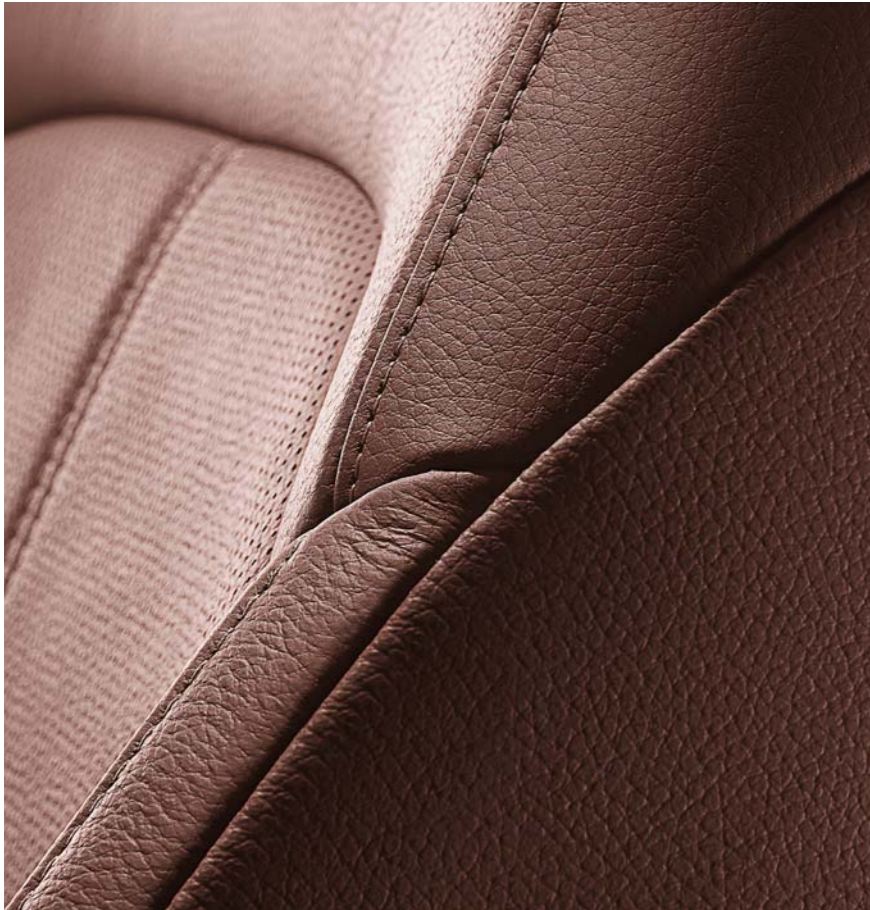
### O. Overhead console

A deluxe map lamp and sunglasses case offer convenient storage in a perfect location.

\*The images in this brochure show full option cars. Depending on the region, there may be some differences.

# INTERIOR COLOR TRIMS

Choose Tucson and you will be presented with a variety of choices for the interior color trim. There's black one-tone, beige two-tone, and new brown one-tone. A further level of personalization is possible, as you can select from a range of seat coverings, including woven and knitted cloth and leather. Make Tucson your own.



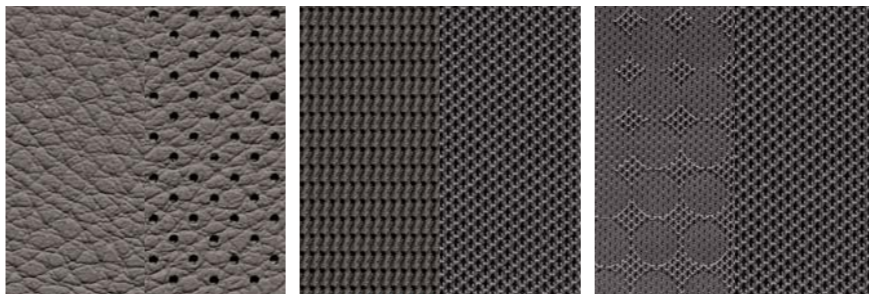
Brown One Tone



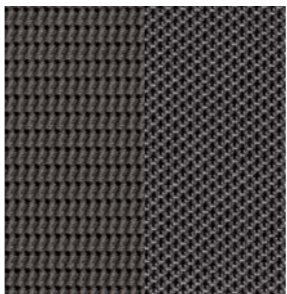
Full Leather



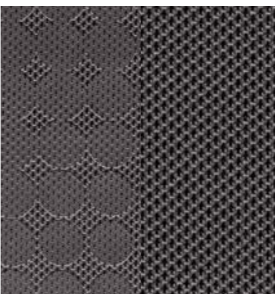
Beige Two Tone



Full Leather



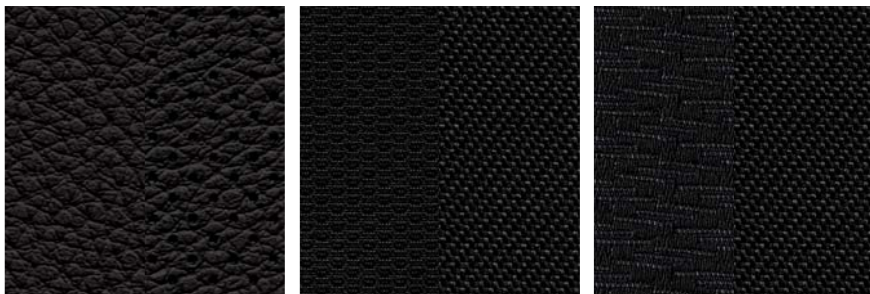
Woven + PU Leather



Knit



Black One Tone



Full Leather

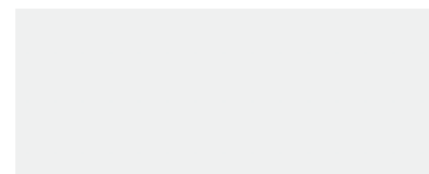


Woven + PU Leather

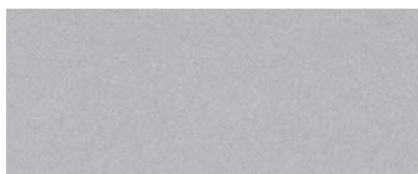


Knit

## EXTERIOR COLORS



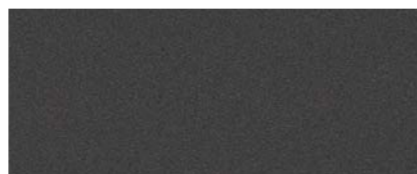
PKW Pure white



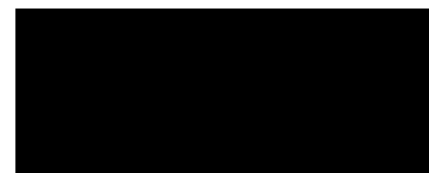
WEA Sleek silver



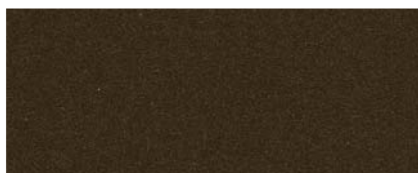
WJX Hyper metallic



TAK Titanium gray



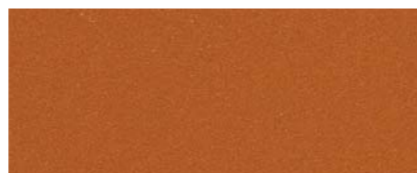
TCM Phantom black



SN5 Chocolate mousse



SAZ Remington red



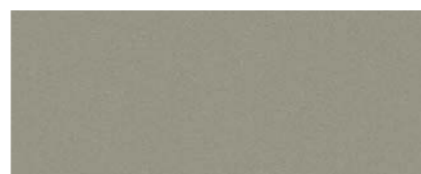
TA5 Atomic orange



PU5 Cobalt coast



NU5 Sky high



Y5Y Mystic beige

There are 11 exterior colors in all. From the enduring appeal of Phantom black - a shade that's never out of fashion - to the wow of Remington red, the tastefulness of Titanium gray and a choice of two metallics, the spectrum is designed to lift the senses. Adding to the colors of the urban landscape are new Atomic orange, Sky high, Cobalt coast, Chocolate mousse and Mystic beige, plus unadulterated Pure white.



17" steel wheel



17" alloy wheel



18" alloy wheel

## WHEELS

From the ground up, Tucson is the definition of style, and its new 17" and 18" alloy wheels provide the proof. Multi-spoked, elegant and racy, they're optimally ventilated to prevent the brakes from overheating, and are fitted with silica tires for reduced fuel consumption.

## SPECIFICATIONS

Engine	Gasoline				Diesel			
	Nu 2.0 MPI				Theta II 2.4 MPI	R 2.0 CRDi (High)		
	2WD		4WD		4WD	2WD	4WD	
Type	M/T	A/T	M/T	A/T	A/T	M/T	M/T	A/T
Max.Power (ps/rpm)	158 ps / 6,200 rpm (EU-2*) 154 ps / 6,200 rpm (EU-3, 4, 5*)				177 ps / 6,000 rpm (EU-2, 3, 4*) 170 ps / 6,000 rpm (EU-5*)	177 ps / 4,000 rpm (EU-2, 3*) 184 ps / 4,000 rpm (EU-4*)		
Max.Torque (kg-m/rpm)	19.6 kg-m / 4,000 rpm (EU-2*) 19.5 kg-m / 4,700 rpm (EU-3, 4, 5*)				23.1 kg-m / 4,000 rpm (EU-2, 3, 4*) 22.4 kg-m / 4,000 rpm (EU-5*)	40kg-m / 1,800~2,500(A/T), 39kg-m / 1,800~2,500(M/T)		
0 - 100kph	10.7	11.5	11.3	11.7	10.0	9.4	9.8	9.8
Top speed (kph)	185.0	176.0	184.0	174.0	185.0	195.0	194.0	195.0

- On leaded fuel engines, power & torque figures vary according to local fuel and climate characteristics.
- Please ask your dealer for available engines.

\*European emission standard.

Suspension	
Front	McPherson
Rear	Multi-link
Steering	
Type	Hydraulic power assisted, rack & pinion / Motor power assisted rack & pinion (EU only)
Steering wheel turn (Lock to lock)	2.99 (2.96 in EU Spec, countries)
Wheel & Tire	
Wheel	6.5J X 17" (Steel & Alloy), 6.5J X 18" (Alloy)
Tire*	225/60R17, 225/55R18

- The above values are results from internal testing and are subjected to change after validation.
- Some of the equipment illustrated or described in this catalog may not be supplied as standard equipment and may be available at an extra cost.
- Hyundai Motor Co. reserves the right to change specifications and equipment without prior notice.
- The color plates shown may vary slightly from the actual colors due to the limitations of the printing process.
- Please consult your local dealer for full information and availability on colors and trims.

\*For more information on tire labelling please go to Hyundai's website. (<http://worldwide.hyundai.com>)

## DIMENSIONS

unit : mm



1,585  
1,820



880 | 2,640 | 890  
4,410



1,586

- \*Wheel tread
- 17" steel wheel (F/R) 1,585/1,586
- 17" alloy wheel (F/R) 1,585/1,586
- 18" alloy wheel (F/R) 1,585/1,586